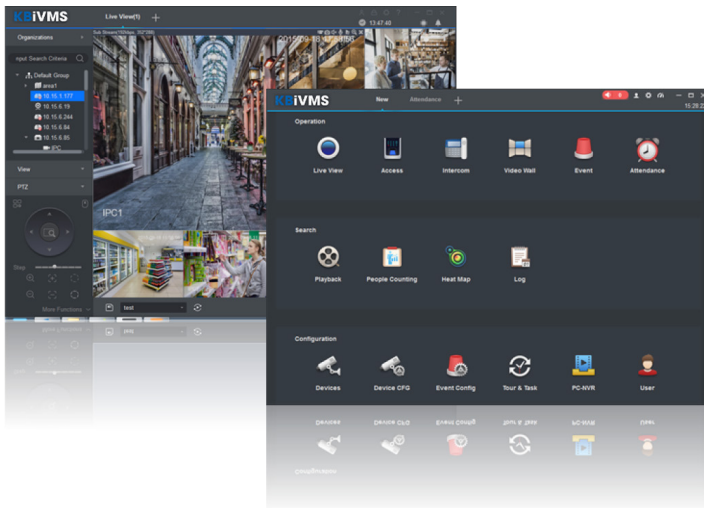


## INTELLIGENT VIDEO MANAGEMENT SYSTEM

Ver. 2.0



- Efficient Device Management
- Manage up to 256 Devices over a Maximum of 2000 Channels
- Manage Access, Video Intercom, and Time and Attendance Devices
- Supports H.265 and H.264 Dual Video Compression Codecs
- Live Video Monitoring and Playback
- Configure Video Wall Layout and Scheme
- Configure NVR Recording
- PTZ Camera Control
- Intelligent Video System (IVS) with People Counting and Heat Map

### System Overview

KBiVMS is an all-in-one, full-featured video surveillance application that is ideal for the small to mid-size business that needs to monitor people, premises, and assets. KBiVMS integrates all KBVISION network cameras and storage devices into one intuitive, easy to use interface. The software provides efficient device management, video monitoring and playback, alarm and analytic configuration, as well as video wall setup and preview.

### Key Functions

#### Configuration

KBiVMS makes it easy to add devices to the management interface. The application offers device search and batch add functionality to quickly add devices on a network. Once added, KBiVMS provides an interface to configure the network parameters, camera video and audio settings, and live and playback display options.

#### Smart Track

KBiVMS offers the ability to link a fisheye camera or a fixed camera to a PTZ Dome camera for enhanced surveillance operation. The software allows an operator to define a rule (tripwire, zone, loitering, etc.) in the panoramic fisheye or fixed-camera scene that triggers the linked PTZ dome to move to the position of the alarm and to track the object.

#### Fisheye Camera Support

KBiVMS features full support for KBVISION Fisheye cameras. The software supports options for the Fisheye camera installation and eight (8) dewarp modes. Dewarping solves the problem of distortion in the circular panoramic view in both live or playback modes.

#### Access and Video Intercom Control

KBiVMS supports configuration and management of access, video intercom, and time and attendance devices directly from the user interface. KBiVMS allows a user to manage users and permissions for access control, supports two-way talk with video intercom devices, and supports attendance management, shift scheduling, reporting for multiple time and attendance devices.

#### Smart Search

Smart Search allows an operator to specify a region in the playback video to search for a motion detection event, saving time and manpower.

#### Intelligent Video System (IVS)

KBiVMS displays the real-time IVS features built-in to KBVISION network cameras. IVS is an analytic algorithm that delivers intelligent functions to monitor a scene for Tripwire violations, intrusion detection, and abandoned or missing objects. In addition to scene analytics, KBiVMS supports face detection technology that identifies human faces in digital images and then searches a database to identify the individual in the image.

#### Intelligent Business Analysis

KBiVMS also supports people counting and heat map; advanced features that add business intelligence to your security system. Intelligent Analysis tracks and stores daily, weekly, monthly, and yearly people flow through a defined scene and stores the data. KBiVMS retrieves this data and supports searching, displaying, and storing the data.

#### Video Wall

KBiVMS offers settings to configure all aspects of a video wall application. The application supports video wall layout, live preview, scheme configuration, and tour setup. In addition, the application supports video wall splicing and roaming.

#### Multi-language On-screen Display

The OSD menu provides supports 34 languages and allows multiple image adjustments and function settings to meet the requirements of different monitoring scenes.

## INTELLIGENT VIDEO MANAGEMENT SYSTEM

Ver. 2.0

### Technical Specification

#### Installation Requirements

Operating System	Windows 7 or Higher
CPU	Intel Core i3 or Higher
Video Display Card	Intel HD Graphics or Better
Memory	2 GB, minimum
Monitor Resolution	1024 x 768, minimum
Language Support	Albanian, Arabic, Brazil Portuguese, Bulgarian, Chinese, Croatian, Czech, Danish, Dutch, English, Farsi, Finnish, French, German, Greek, Hebrew, Hungarian, Indonesian, Italian, Japanese, Korean, Norwegian, Polish, Portuguese, Romanian, Russian, Serbian, Slovak, Slovenian, Spanish, Swedish, Thai, Traditional Chinese, Turkish, Vietnamese

#### Device Support

Supported Devices	Network Camera (fixed and PTZ) HDCVI DVR NVR NVS Video Wall Controller NKB ASC and ASM (Access Control) VTO, VTH, and VSC (Video Intercom) ASA (Time and Attendance)
Maximum Devices	64
Maximum Management Channels	256
Maximum Users	50
Video Compression	H.265, H.264, MPEG-4, JPEG, SVAC

#### Live View

Video Display Split	Windows: 1/4/6/8/9/16/25/36/64 Mac: 1/4/6/8/9/16/25/36 or customized split
Maximum Preview Screens	Four (4)
Maximum Views	256
Display Resolution	up to 4000 x 3000
Features	Snapshot, E-PTZ, Audio, Record, Talk, Instant Playback, Tour Task, View, Fisheye Dewarp, IVS, Stream Control, Optional Video Scale
PTZ	Control PTZ Cameras with Mouse or Interface Configure Presets and Tours

#### Playback

Maximum Channels	36
Maximum Export Tasks	Ten (10)
Features	Snapshot, E-PTZ, Audio, Speed (1/8x to 8x) Synchronized Playback, POS, Fisheye Dewarp, IVS, Faster/Slower Play, Optional Video Scale

#### Access Control

Maximum Channels	Controllers (ASC Series): 64 Time and Attendance (ASA Series): 10
Maximum User	10,000
Maximum Number of Event Logs	100,000

#### Video Intercom

Maximum Channels	Call Station (VTO Series): 64 Monitors (VTH Series): 256 VTS Series: 8
Maximum User	10,000

#### Functionality

Devices	Add single or multiple devices via AutoSearch Configure and operate devices
Live View	View live video Record to a local device Configure and control device Configure device IVS features Create E-Map
Tour and Task	Configure a tour of network cameras
Playback	View video from a local or external storage device Export video
Log Search	Search client and device logs
Device Configuration	Update device firmware Configure camera, network, PTZ, and storage settings
Event Configuration	Configure channel events (video loss, tampering, motion detection), IVS (tripwire, intrusion, scene switch, abandoned object, missing object, face detection), and device events (no disk, disk fault, disk full, and unauthorized access)
Video Wall	Set video wall layout, live preview, schemes and tours, and playback
People Counting	Retrieve data from enabled devices Search data using various criteria Display data as a line or bar chart
Heat Map	Displays high/low population densities from enables devices Search and backup data
PC-NVR	Configure PC-NVR software Manage disk space and channel settings Set Intelligent recording plan
Access Control	User Management Permission Functionality Rules Configuration Event Configuration Log Review
Video Intercom	Live View Two-way Talk Send Announcement Device Configuration
Time and Attendance	Attendance Setting Shift Scheduling Attendance Reporting